

40 YEARS OF HELP LEGACY

HELP
University
university of achievers
DU028(W)

EDUCATION

LUO YIING
Education Student



5 STARS
INSTITUTION



GRADE UP YOUR IMPACT. BECOME WHO YOU'RE MEANT TO BE.

OUR MISSION

IS TO HELP EVERY STUDENT SUCCEED IN LIFE AND TO LIVE A LIFE OF SIGNIFICANCE

We've built this commitment around four key pillars that shape your journey with us:



ACADEMIC EXCELLENCE

Learn from passionate educators who go beyond textbooks to make every class engaging, inspiring, and meaningful.



LIFE AND CAREER PREPARATION

Gain the confidence, skills, and real-world know-how to thrive through enhanced curriculum.



VIBRANT STUDENT LIFE

From clubs and events to building friendships, campus life at HELP is about discovering your joy, passion, and purpose.



WELLNESS AND COMMUNITY

Feel at home in a caring, supportive environment where your wellbeing truly matters.



HOW WE ARE PREPARING YOU TO SUCCEED IN AN AI WORLD

1

8 HELP Graduate Attributes Equipping you with key human skills:

- Digital Agility
- Social Intelligence
- Strategic Communication
- Mental Agility
- Environmental & Global Literacy
- Moral Courage
- Resilience & Wellness
- Clarity of Purpose

2

Real-World Projects

Work on real company projects and build the professional skills employers want.

3

Industry-Relevant Micro-Credentials

Enhance your resume with credentials from top global companies.

4

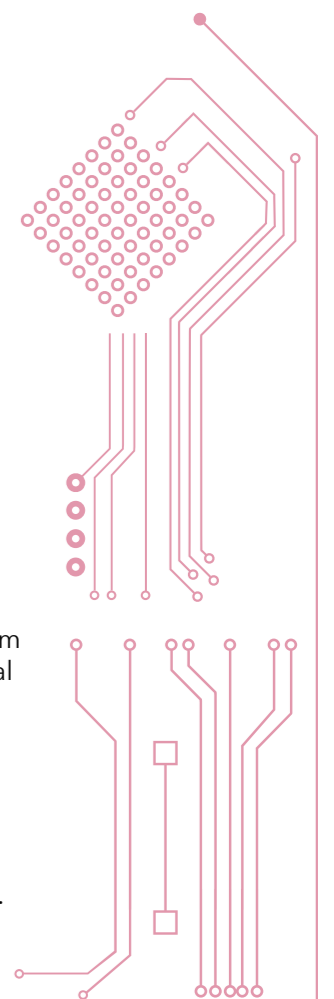
Mentoring and Expert Talks

Learn future-ready skills from industry mentors and global thought leaders.

5

Internships With Top Organisations

Internship programmes with over 1,000 companies.



8 HELP GRADUATE ATTRIBUTES

Our curriculum blends essential life skills with professional know-how to prepare students for success in both work and life.

1 DIGITAL AGILITY

Offered by **Microsoft**
Python for Beginners

Offered by **Google**

- Introduction to Generative AI
- Getting Started with Data
- Getting Started with Cybersecurity

2 SOCIAL INTELLIGENCE

Offered by **Google**
Brainstorm Ideas in a Group

Offered by **HELP University**
Understanding People / Behaviour Insights

Offered by **LinkedIn Learning**
Developing your Emotional Intelligence

Offered by **University of Cape Town**
Becoming a Changemaker:
Introduction to Social Innovation

3 STRATEGIC COMMUNICATION

Offered by **Google Garage**
Communicate your Ideas through
Storytelling and Design

Offered by **HELP University**
Digital Content Creation

Offered by **HP Life**
Effective Presentation Communication



"Cultivating these attributes today empowers you to thrive tomorrow, as you become a leader, a problem-solver, and a lifelong learner in an ever-changing world."

Venon Tian
Chief Operating Officer
ZUS Coffee

4 MENTAL AGILITY

Offered by **IBM**
Solving Problems with Creative and Critical Thinking

Offered by **HELP University**
Effective Learning Skills

6 MORAL COURAGE

Offered by **UNICEF**
Community Engagement and Humanitarian Programmes

Offered by **World Vision**
Volunteerism

8 CLARITY OF PURPOSE

Offered by **CAREERsense**

- Career Readiness
- Interviewing and Resume Writing

Offered by **HELP University**
Personality Testing

5 ENVIRONMENTAL & GLOBAL LITERACY

Offered by **World Vision**

- Global Citizenship
- Planetary Health

Offered by **HRDC**
ESG Awareness

7 RESILIENCE & WELLNESS

Offered by **HELP University**

- Stress Management
- Psychology First Aid

Offered by **St. John Ambulance**
First Aid and CPR

Offered by **HRDC**
Time Management

"Staying resilient in pursuit of success comes with tenacity. For young people, the secret lies in balancing digital agility with the timeless strength of human connection and empathy - both for self and others, and these attributes are aligned with the needs."

Vinesh Naidu
Director,
Human Capital
PwC Malaysia

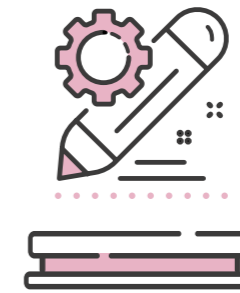


***Disclaimer:** Some of these short courses are offered through open-source platforms and are compulsory for all HELP students.

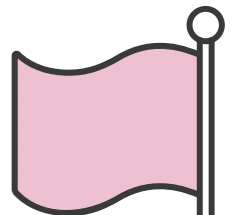


WHY STUDY EDUCATION @ HELP

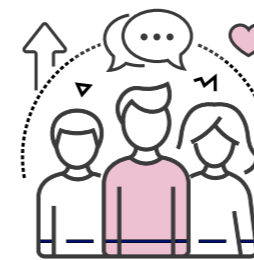
LEARN BY DOING



100% coursework based, giving you hands-on experience through real-world projects.



CONNECT WITH EXPERTS



Gain insights from industry professionals, workshops, and our strong alumni network.

GUIDED PRACTICAL LEARNING



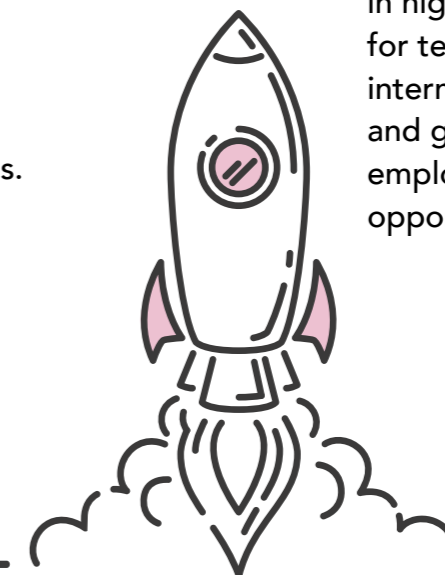
Work-based assignments mentored by experienced kindergarten and education experts.

MAKE AN IMPACT



Get involved in community service and education-focused events.

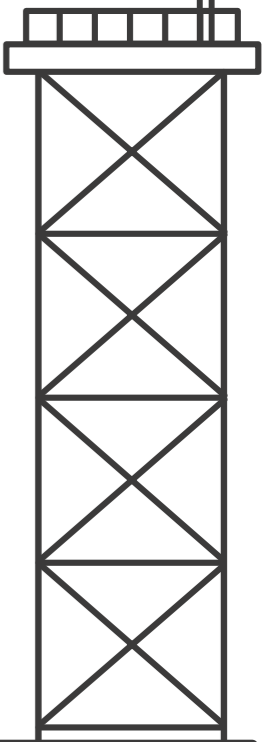
CAREER READY



Our students are in high demand for teaching internships and graduate employment opportunities.



Scan and Explore our diverse and accomplished academic team

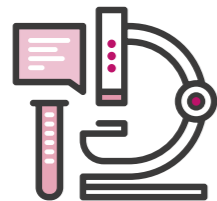


GAIN REAL-WORLD EXPERIENCE AT HELP INTERNATIONAL SCHOOL



Through our partnership with HELP International School (HIS), students immerse themselves in a world-class school environment, learning directly from experienced teaching faculty and participating in meaningful research projects.

COLLABORATIVE RESEARCH



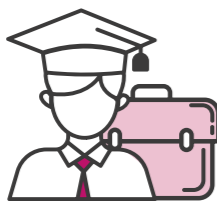
Lecturers from the Department of Education work alongside HIS teachers in the Early Childhood Center.

PRACTICUM AND INTERNSHIPS



Hands-on experience for students in Early Childhood Education and MEDTL programmes.

CAREER OPPORTUNITIES



Potential employment at HIS after graduation.

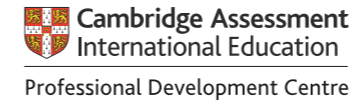
PROFESSIONAL DEVELOPMENT



HIS teachers receive training through postgraduate studies in Teaching and Learning.

A WORLD CLASS INTERNATIONAL SCHOOL

HELP International School (HIS) is a globally accredited, award-winning institution known for academic excellence and innovation.



HIS offers globally recognised Cambridge programmes from primary to pre-university, recognised by universities worldwide.



This mirrors HIS' commitment to innovation in education and leadership through their Apple.Inc Partnership.



A recognition of HIS' dedication and commitment to helping students think critically and use technology responsibly to learn, create, participate, and share.



This recognition reflects HIS' dedication to sustainable management of school grounds, facilities and curriculum.



The TES Awards celebrate excellence in education in the UK and internationally. In 2024, HIS was shortlisted for International School of the Year and Best Use of Technology.



HIS is a member of FOBISIA, a Regional Federation of leading British International Schools in Asia



HIS was recognised for delivering a holistic, thematic curriculum that builds globally minded, confident learners with strong personal and communication skills.



As a CIS member HIS is committed to high-quality international education, developing global citizens, and upholding rigorous standards in teaching, learning and student well-being.



HIS was named a winner at the Life At Work Awards (LAWA) 2025 for championing diversity, equity and inclusion (DEI) and sustainability at the workplace.

ALUMNI TESTIMONIAL



"My experience at HELP integral to my career as an early childhood educator. I enjoyed getting to know each new topic and lecturer, as well as building friendships with like-minded students. The assignments, though challenging, gave me opportunities to apply the theories we learned, and I still use many of the strategies in my third year of teaching in California. I recommend HELP University to anyone who wishes to enter the field of teaching, as it ignites your passion for education and provides a holistic approach to shaping the next generation of learners."

Kallen Mackenzie Klein
Bachelor of Early Childhood Education (Honours)



"My journey at HELP University, from diploma to degree, has been a meaningful and transformative experience. The programme challenged me to step beyond my comfort zone, shaping me into a more innovative and creative thinker. Through real-life learning, particularly micro-teaching sessions, I gained hands-on experience that prepared me for the classroom and strengthened my confidence as an educator. Overall, HELP has equipped me with essential skills and practical insight for the next stage of my professional journey."

Jessica Yee Li Theng
Bachelor of Early Childhood Education (Honours)



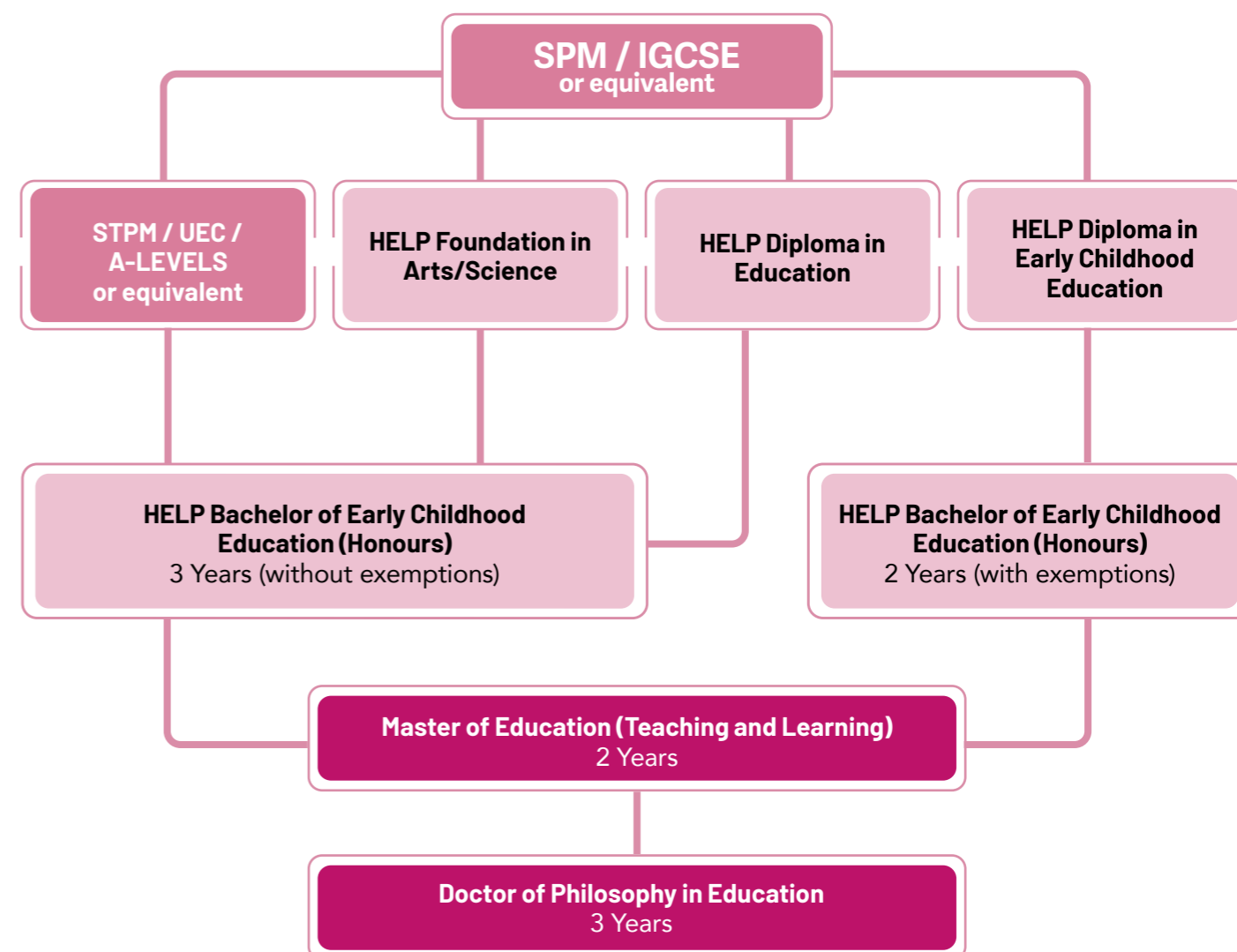
"My journey at HELP University began during the pandemic, yet it became one of the most meaningful experiences of my life. Supportive lecturers and a close-knit environment made every lecture something I looked forward to, while learning alongside peers from diverse countries gave me a strong sense of belonging and a global perspective."

The Early Childhood Education programme helped me grow academically and personally, building my confidence in lesson planning and creating inclusive learning environments. Highlights such as Extravaganza and my internship at HELP International School provided valuable real-world experience. HELP University did more than prepare me for a career – it shaped who I am today."

Goh Jing Hui
Bachelor of Early Childhood Education (Honours)

UNLOCKING A WORLD OF OPPORTUNITIES

Explore pathways from secondary education to university and beyond. Earn your degree, pursue postgraduate opportunities, and step confidently into a successful career.



DIPLOMA IN EARLY CHILDHOOD EDUCATION

(R2/0112/4/0100) (06/28) (MQA/FA2145)

This programme equips students with the skills and knowledge to become effective educators. Over two years, you'll explore child development, teaching methods, language, health, and curriculum planning, while gaining skills in special needs support, leadership, and even early childhood entrepreneurship.

PROGRAMME DETAILS

The programme is a study of 28 courses:

- 19 Core Major
- 2 Electives
- 2 Practicum
- 5 HEP/MQA - MPU Compulsory Subjects

STUDY LOAN AND STUDY AWARDS

Candidates can apply for PTPTN Loan, EPF withdrawal, HELP University Study Awards and fee waivers.

DECE TRANSITS TO BECE

DECE qualified and certified Educator-Carers are eligible for direct admission into the 2nd year of the BECE (Hons) Programme.

INTAKES

January, May, August

COURSES

YEAR 1

- Teaching and Learning in Early Childhood Settings
- Child Development
- Children and Play
- Observation and Assessment of Young Children
- ICT and Multimedia
- Health, Safety and Nutrition for Young Children
- Visual Arts
- Music, Movement and Drama for Young Children
- Early Mathematics
- Social Studies and Environment
- Physical Education and Wellness

YEAR 2

- Spirituality, Values and Citizenship
- Early Science and Technology
- Teaching Young Children BM
- Teaching Young Children English
- Curriculum Planning and Program Development
- Introduction to Special Education
- Families and Community
- Foundation of Early Childhood Business and Entrepreneurship

PRACTICUM

- Practicum I (TASKA)
- Practicum II (TADIKA)

ELECTIVES (Choose 2)

- Guiding Young Children's Behaviours
- Academic English for Early Childhood Educators
- Ethics and Professionalism for Early Childhood Professional
- Managing Early Childhood Settings

MPU SUBJECTS

MPU1 (Choose 1)

- Penghayatan Etika dan Peradaban
- Falsafah dan Isu Semasa
- Bahasa Melayu Komunikasi 1 (International)

MPU2 / MPU3

- Bahasa Kebangsaan A (for Local students without a credit in SPM Bahasa Melayu), and
- Integrity and Anti-Corruption (Malaysian and International)

MPU4 (Choose at least 1)

- Co-curriculum - Sports 2
- Co-curriculum - Community Service 2

GENERAL ELECTIVE

- Communication 1

HELP GRADUATE ATTRIBUTE

- Discovering Oneself

DIPLOMA IN EDUCATION

(R/0113/4/0003) (11/29) (MQA/FA12317)

This programme gives future primary and secondary school teachers a strong foundation in education—covering key developments, best practices, essential theories, technology, and practical pedagogical skills for effective teaching and learning.

PROGRAMME DETAILS

2½ year / 2 years 1 sem programme which is a study of 27 courses @ 90 credit hours:

- 19 Core Major
- 2 Electives
- 1 Practicum
- 5 HEP/MQA - MPU Compulsory Subjects

INTAKES

January, May, August

Learners are expected to develop good pedagogical skills in classroom teaching and learning environments with an emphasis on practical methodologies, content, general pedagogy, and instructional technology needed to excel in a 21st century and IR 4.0 learning context.

The Diploma in Education programme prepares learners to apply broad-based knowledge of teaching and learning, higher order thinking, and reasoning skills in varied educational settings. This course equips learners with mastery in pedagogical content knowledge, incorporates soft-skill development and helps the learner contribute professionally in different learning environment.

COURSES

YEAR 1

- History and Philosophy of Education
- Psychology of Education
- Theories and Practice of Teaching and Learning
- Curriculum Planning
- Child and Adolescent development
- Physical and Health Education
- Visual Art Education
- Music and Movement Education
- Sociology of Education
- Effective Classroom Management

YEAR 2

- Social Studies and Environmental Studies
- Educational Assessment
- Teaching English
- Teaching Bahasa Malaysia
- Moral Education
- Education Technology
- Teaching Mathematics
- Teaching Science
- Project-Based Learning

PRACTICUM

- Teaching Practicum

ELECTIVES (Choose 2)

- Special Needs Education
- Educational Management and Leadership
- Academic English
- Entrepreneurship in Education

MPU SUBJECTS

MPU1 (Choose 1)

- Penghayatan Etika dan Peradaban
- Falsafah dan Isu Semasa
- Bahasa Melayu Komunikasi 1 (International)

MPU2 / MPU3

- Bahasa Kebangsaan A (for Local students without a credit in SPM Bahasa Melayu), and
- Integrity and Anti-Corruption (Malaysian and International)

MPU4 (Choose at least 1)

- Co-curriculum - Sports 2
- Co-curriculum - Community Service 2

GENERAL ELECTIVE

- Communication 1

HELP GRADUATE ATTRIBUTE

- Discovering Oneself

BACHELOR OF EARLY CHILDHOOD EDUCATION (HONOURS)

(R2/0112/6/0041) (05/27) (A10104)

HELP's Bachelor of Early Childhood Education (Hons) equips future early childhood specialists with a wide range of skills to support children from birth to the junior primary years.

PROGRAMME DETAILS

The contents of the study fulfil the minimum 121 credit hours comprising 36 subjects:

- 24 Major ECE Courses
- 4 Electives
(2 ECE Electives, 1 Open Elective & 1 General Elective)
- 2 Workplace Practicums in Nursery and Kindergarten respectively
- 4 MPU Courses
- 2 HGA Courses

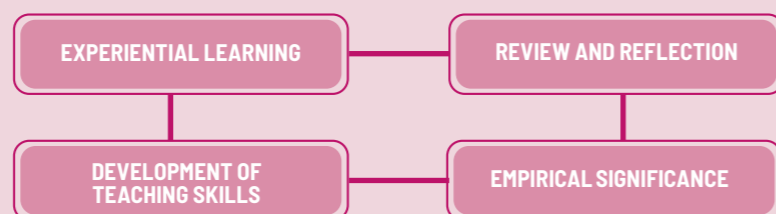
INTAKES

January, May, August

DELIVERY AND ASSESSMENT MODES

This programme uses a blended learning approach, combining face-to-face and online classes. With a strong focus on student-centred learning, it offers diverse learning experiences, teaching methods, and academic support tailored to students' interests and goals.

Assessment is designed to ensure graduates are fully qualified educators and caregivers. Students will be evaluated through both formative and summative methods, including written and practical tasks, presentations, portfolios, projects, and community service.



COURSES

YEAR 1

- Growth and Development for Early Childhood
- Teaching and Learning in Early Childhood, Care and Education
- Children and Play
- Health, Safety and Nutrition for Young Children
- Art and Craft
- Spiritual and Moral Education in Early Childhood
- Music and Movement in Early Childhood
- Observation and Assessment in Early Childhood
- Foundation of Early Childhood Business and Entrepreneurship
- Curriculum Planning & Programme Development
- Elective 1

- Early Childhood Entrepreneurship and Management
- Physical and Health Education in Early Childhood
- Research Methodology in Early Childhood
- Elective 2

YEAR 3

- Families, Community and Society
- Children's Theatre
- Issues, Ethics and Professionalism in Early Childhood Education
- Early Childhood Research Project
- Practicum 1: Nursery Practicum
- Practicum 2: Preschool Practicum
- Open Elective

ELECTIVES (Choose 2)

- Teaching Young Children Mandarin
- Literature for Young Children
- Introduction to Play Therapy
- Learning disabilities
- Academic English

OPEN ELECTIVES (Choose 1)

- Principles of Marketing
- Principles of Management
- Information Technology Business
- Educational Psychology
- Contextual Intelligence
- Scientific Thinking and Academic Writing

YEAR 2

- Managing Young Children's Behaviours
- Social and Environment Studies in Early Childhood
- Science and Technology in Early Childhood
- Mathematics in Early Childhood
- Teaching Young Children English
- Teaching Young Children Bahasa Malaysia
- Special Need in Early Childhood Education

MPU SUBJECTS

MPU1 (Choose 2)

- Penghayatan Etika dan Peradaban
- Falsafah dan Isu Semasa
- Bahasa Melayu Komunikasi 2 (International)

MPU2 / MPU3

- Bahasa Kebangsaan A (for Local students without a credit in SPM Bahasa Melayu)
- A* Gen Careers in Malaysia and Beyond
- Integrity and Anti-Corruption (Malaysian and International)

MPU4 (Choose at least 1)

- Co-curriculum - Sports 2
- Co-curriculum - Event Management 2

GENERAL ELECTIVE:

- Communication and Leadership Skills

HELP GRADUATE ATTRIBUTE

- Discovering Oneself
- Engaging the World

PROGRAMMES	ACADEMIC QUALIFICATION	MINIMUM ENTRY REQUIREMENT	
Diploma in Education	SPM/SPMV/MCE	Min. 3 credits including a pass in Bahasa Melayu and History	ENGLISH REQUIREMENTS INTERNATIONAL STUDENTS IELTS 4.0 or Test (MUET) or any other English competency test equivalent to a Low B1 in the Common European Framework of Reference for Languages (CEFR).
	SKM	A pass in level 3 and pass SPM with one (1) credit or a certificate or its equivalent	
Diploma in Early Childhood Education	GCE O Level	Min. 3 credits	ENGLISH REQUIREMENTS INTERNATIONAL STUDENTS IELTS 4.0 or Test (MUET) or any other English competency test equivalent to a Low B1 in the Common European Framework of Reference for Languages (CEFR).
	STPM	A pass with a min. Grade (GP 2.0) in any subject or equivalent	
	STAM	A pass with a min. Grade of Maqbul or equivalent	
	UEC	Min. 3 Bs	
	Any other equivalent qualifications recognised by Malaysian Government	Pass	
	Qualifying test on BM, English and Mathematics i.e APEL route created by MQA	Pass	
Diploma in Early Childhood Education	SPM/SPMV/MCE	Min. 3 credits including a pass in Bahasa Melayu and History	ENGLISH REQUIREMENTS INTERNATIONAL STUDENTS IELTS 4.0 or Test (MUET) or any other English competency test equivalent to a Low B1 in the Common European Framework of Reference for Languages (CEFR).
	SKM	A pass in Level 3, MQF in Early Child Care / Preschool or certificate (Level 3, MQF) in any qualification with at least a CGPA of 2.00	
	GCE O Level	Min. 3 credits	
	STPM	A pass with a min. Grade (GP 2.0) in any subject or equivalent	
	STAM	A pass with a min. Grade of Maqbul or equivalent	
	UEC	Min. 3 Bs	
Any other equivalent qualifications recognised by Malaysian Government	Pass		
Qualifying test on BM, English and Mathematics i.e APEL route created by MQA	Pass		
Diploma in Early Childhood Education Refer to MQA Current Status. Mature senior candidates with acceptable ECCE qualification, who fulfil the minimum requirements are eligible to apply for advanced standing.			
Bachelor of Early Childhood Education (Honours)	Matriculation or Foundation	Min. CGPA 2.0	ENGLISH REQUIREMENTS INTERNATIONAL STUDENTS IELTS 4.0 or MUET Band 3
	HELP Diploma in Early Childhood	Min. CGPA 2.0	
	Other Foundation or Diploma	Min. CGPA 2.0	
	STPM	A pass with a min. of Grade C (GP 2.0) in any TWO (2) subjects or equivalent	
	STAM	A pass with a min. Grade of Jayyid (good)	
	DKM/DLKM/DVM	Subjected to HEP Senate/ Academic Board's approval	
	A-Levels	Min. 2Ds passes	
	UEC	5Bs	
	CPU	5 subjects passes with a min. average of 50%	
	IB	Min. 24 points	
Australia Matriculation (eg. SACE, AUSMAT, TEE, VCE, NSW)	ATAR 50		
Any other equivalent qualifications recognised by Malaysian Government	Pass		

STUDENT ACTIVITIES

STUDENT COUNCIL OF EDUCATION DEPARTMENT (SCED)

At HELP University, every student from the Education Faculty automatically becomes part of the Student Council. This supportive, vibrant community brings campus life to the next level through community projects and campus activities. Highlights include:

- ECCE Violence-Free Week
- Anti-bullying workshops with UNICEF
- Pop-Up Stories fan club activities
- Orang Asli study camps

Extravaganza

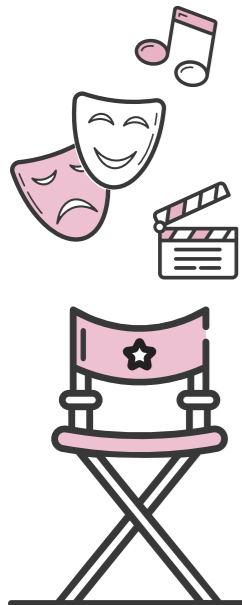
The Early Childhood Extravaganza (ECE) is an annual event co-organised by the Department of Education's students and staff.

The initiative is aimed at building students' values and skills through hands-on event management, and to showcase their learning materials to families and friends.

The event features storytelling, art exhibitions, music and movement, and children's theatre performances. Children from various homes and centres also are invited to join the fun-filled celebrations.

Mentoring Programme

The ECE Students Council also supports both new and continuing students. During orientation, new students are paired with seniors through a buddy system to help them ease into university life and transition smoothly into their undergraduate or postgraduate journey.



ECCE Violence Free Week



Recital with the angklung that ECE students master and teach to preschoolers.



Storytelling using creative visual aids.

MASTER OF EDUCATION (TEACHING AND LEARNING)

(R/0110/7/0036) (04/29) (MQA/FA8168)

The Master of Education (Teaching and Learning) offers a space for educators and aspiring teachers to reflect on their practice, refine their skills, and elevate the way they teach and support learning.

PROGRAMME DETAILS

From 2 years (full-time) to 4 years (part-time) leading to the HELP Master of Education (Teaching and Learning).

INTAKES

January, May, August

Those who complete the programme will develop a strong foundation as reflective, caring professionals who apply current theories and research to real-world teaching. Graduates can pursue roles such as heads of department, programme directors, academic advisors, curriculum designers, higher education lecturers, trainers, teachers, tutors, and school administrators.

SUBJECTS

- Foundations of Education
- Curriculum and Pedagogy
- Education Technology and Digital Innovation in Learning
- Teaching of Language and Literature
- Teaching of Mathematics and Science
- Teaching of Social Studies and Environment
- Educational Research Methodology
- Educational Management and Leadership
- Business and Entrepreneurship in Educational Contexts
- Research Inquiry in Education Settings
- Practicum



DOCTOR OF PHILOSOPHY IN EDUCATION

(N/0110/8/0041) (07/27) (MQA/FA13817)

The PhD in Education at HELP is designed for passionate educators and researchers ready to make a real impact in their field. Combining coursework with in-depth research, the programme allows you to specialise in Educational Management, Early Childhood Education, or Teaching English as a Second Language.

The mixed-mode structure begins with guided coursework to build subject mastery and research skills before moving into the dissertation phase.

Through seminars and workshops, learners develop a Concept Paper that connects theory with practice while preparing for advanced research. These sessions also provide the support needed to complete the dissertation successfully.

Graduates emerge as professional researchers and subject-matter specialists ready for roles across education institutions.

PROGRAMME DETAILS

3-year programme (one year of coursework and two years of dissertation exercise). The whole programme comprises a total of 80 credit hours as shown below:

- The coursework phase comprises 6 courses totalling 24 credit hours and the dissertation phase comprises 56 credit hours (coursework to dissertation ratio: 30:70) incorporating the following aspects:
- 2 Compulsory Subjects
- 2 Specialisation Subjects
- 1 Elective
- 1 Concept Paper
- Dissertation

INTAKES

January, May, August

YEAR 1

SEMESTER 1

Compulsory Courses

- Advanced Educational Research Methodology
- Data Analysis in Research

SEMESTER 2 & SEMESTER 3

Select any ONE of the THREE Subject Specialisations

Concentration: Educational Management

- Educational Management and Leadership
- Management of Educational Change

Concentration:

Early Childhood Education

- Theories and Practices of Early Childhood Education
- Child Development

Concentration:

Teaching of English as a Second Language (TESL)

- Second Language Teaching Methodology and Learning
- Second Language Acquisition

ELECTIVES

The elective subject will be chosen from any one of the subject specialisations. For example, if a learner's subject specialisation is

Educational Management, then the elective subject can be selected from either Early Childhood Education or Teaching of English as a Second Language.

COMPULSORY COURSE

- Concept Paper

YEAR 2

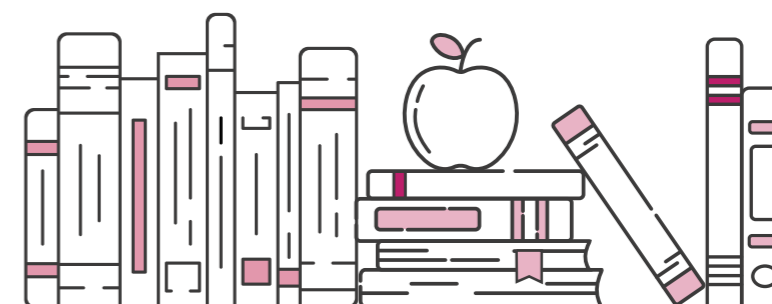
- Dissertation

YEAR 3

- Dissertation



Scan here to discover more about ELM Graduate School



NEED HELP WITH YOUR CAREER DECISIONS?

Get free career counselling and testing services

- ▶ CAREER TESTING
- ▶ CAREER COACHING
- ▶ INTERNSHIP PROGRAMMES
- ▶ JOB PLACEMENT



Scan for a free career test

ALUMNI HELP FOR LIFE

At HELP, we're with you for life. Our alumni enjoy lifelong benefits and support every step of the way.



LIFELONG LEARNING

Advance your journey with Master's or Doctorate programmes.



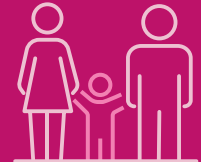
MENTAL WELLNESS AND FAMILY

Access counselling and psychological support for you and your loved ones.



RESKILLING AND UPSKILLING

Stay ahead with micro-credentials for today's in-demand jobs.



PARENTING SUPPORT

Enjoy free workshops to guide you through parenthood.

HELP UNIVERSITY SDN BHD

Company Registration Number: 198201005211 (84963-D)

MOHE Approval Number: DU028(W)

2, Persiaran Cakerawala,
Seksyen U4, 40150,
Shah Alam, Selangor, Malaysia

+6012-928 0864

university.help.edu.my

study@help.edu.my



SCAN TO FOLLOW US ON SOCIAL MEDIA

