



# EDUCATION











# OUR MISSION IS TO HELP EVERY STUDENT SUCCEED IN LIFE AND TO LIVE A LIFE OF SIGNIFICANCE

To accomplish this, we have developed 4 pillars that will encapsulate your university experience at HELP



## ACADEMIC EXCELLENCE

Our dedicated team of educators will ensure you have an engaging and meaningful learning experience



## LIFE AND CAREER PREPARATION

Our enhanced curriculum will give you the advantage you need to thrive and succeed in your career and your life



## VIBRANT STUDENT LIFE

Our full and exciting campus experience will help you find your joy of life and passion



## WELLNESS AND COMMUNITY

Our caring community of students and staff will make you feel welcome, safe and well

# HOW **AI** IS CHANGING THE FUTURE OF WORK



## CHALLENGES

By 2025:

**85 million jobs** to be displaced by AI

**50%** of all employees will need to reskill in order to remain relevant

## OPPORTUNITIES

By 2025:

**97 million new jobs** will be created by new technologies, spurring innovation and growth across various sectors

\*Source for all information on this page: World Economic Forum (WEF) Future of Jobs Report 2023

## WHAT **"HUMAN SKILLS"** ARE NEEDED TO OPTIMIZE AI-HUMAN SYNERGY

- ▶ Digital agility
- ▶ Social skills
- ▶ Emotional Intelligence (EQ)
- ▶ Mental agility & critical thinking
- ▶ Social intelligence and people skills
- ▶ Communication skills
- ▶ Analytical thinking
- ▶ Resilience and Adaptability

# HOW WE ARE PREPARING YOU **TO SUCCEED** IN AN **AI WORLD**

## 1 8 HELP GRADUATE ATTRIBUTES

(page 4)

Equipping you with  
key human skills:

- ▶ Digital Agility
- ▶ Social Intelligence
- ▶ Strategic Communication
- ▶ Mental Agility
- ▶ Environmental & Global Literacy
- ▶ Moral Courage
- ▶ Resilience & Wellness
- ▶ Clarity of Purpose

## 2 REAL WORLD PROJECTS

(page 7)

- ▶ Develop cutting edge professional skills by completing real work projects designed by real companies

## 3 INDUSTRY RELEVANT MICRO CREDENTIALS

(page 6)

Strengthen your CV  
with Micro Credentials  
from top global  
companies

## 4 MENTORING AND TALKS BY INDUSTRY EXPERTS

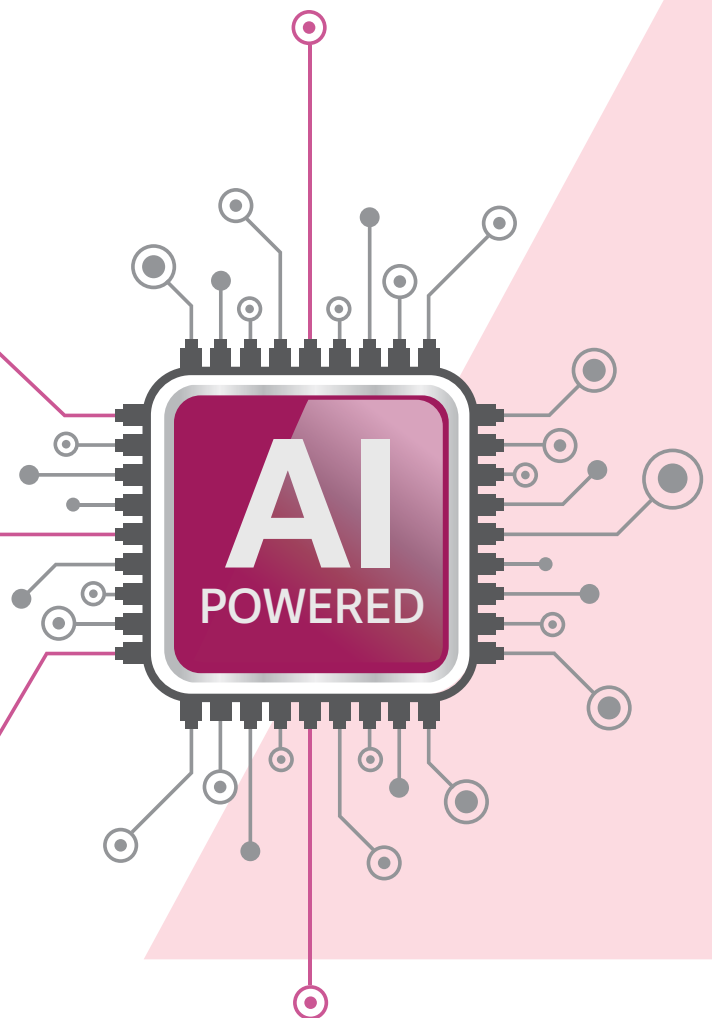
(page 6)

Learn the latest ideas and skills  
from global thought leaders

## 5 INTERNSHIPS WITH TOP ORGANIZATIONS

(page 7)

- ▶ Internship programmes with over 1,000 companies





# HELP GRADUATE ATTRIBUTES



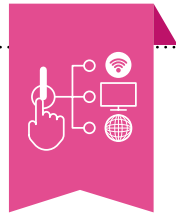
**Gayathri Vadivel**  
Head of Employment  
Services Division  
Social Security Organisation  
Malaysia (PERKESO)

“ In today's dynamic world, filled with much complexity and rapid changes, attributes including digital agility, social intelligence and mental agility particularly empowers us to thrive in an ever evolving world of work. ”



**Venon Tian**  
Chief Operating Officer  
ZUS Coffee

“Cultivating these attributes today empowers you to thrive tomorrow, as you become a leader, a problem-solver, and a lifelong learner in an ever-changing world.”



## 1 DIGITAL AGILITY

- Python for beginners

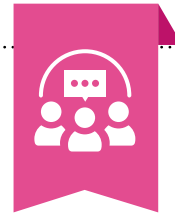
Offered by  
**Microsoft**

- Introduction to Generative AI
- Getting Started with Data
- Getting Started with Cybersecurity

Offered by  
**Google**

- Level up with CHATGPT

Offered by  
**Jobstreet**



## 2 SOCIAL INTELLIGENCE

- Brainstorm Ideas in a Group

Offered by  
**Google**

- Becoming a Changemaker: Introduction to Social Innovation

Offered by  
**University of Capetown**

- Understanding People / Behaviour Insight

Offered by  
**HELP University**

- Developing your Emotional Intelligence

Offered by  
**LinkedIn Learning**



## 5 ENVIRONMENTAL & GLOBAL LITERACY

- Global Citizenship
- Planetary Health

Offered by  
**World Vision**

- ESG awareness

Offered by  
**HRDC**



## 6 MORAL COURAGE

- Community engagement and humanitarian programmes

Offered by  
**UNICEF**

- Volunteerism

Offered by  
**World Vision**

**\*Disclaimer:** Some of these short courses are offered through open-source platforms and are compulsory for all HELP students.

Our curriculum integrates these attributes to prepare students with essential life skills and professional competencies for success in work and life



## 3 STRATEGIC COMMUNICATION

- Communicate your Ideas through Storytelling and Design

Offered by  
**Google Garage**

- Effective Presentation Communication

Offered by  
**HP Life**

- Digital Content Creation

Offered by  
**HELP University**



## 4 MENTAL AGILITY

- Effective Learning Skills

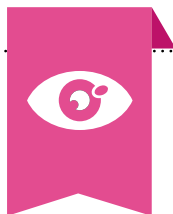
Offered by  
**HELP University**

- Solving Problems with Creative and Critical Thinking

Offered by  
**IBM**

- Time Management

Offered by  
**HRDC**



## 7 RESILIENCE & WELLNESS

- Stress Management
- Psychology First Aid

Offered by  
**HELP University**

- First aid and CPR

Offered by  
**St. John Ambulance**



## 8 CLARITY OF PURPOSE

- Personality Testing

Offered by  
**HELP University**

- Career Readiness
- Interviewing and Resume Writing

Offered by  
**Jobstreet**



**Ho Sau Fong**  
Senior Partnerships Manager  
Jobstreet by SEEK

“ With these skills and certs, students will be ready to crush industry challenges, stand out, and make an impact in their careers.”



**Vinesh Naidu**  
Director - Human Capital  
PwC Malaysia

“ Staying resilient in pursuit of success comes with tenacity. For young people, the secret lies in balancing digital agility with the timeless strength of human connection and empathy - both for self and others, and these attributes are aligned with the needs.”

”



# GAIN REAL-WORLD EXPERIENCE AT



## HELP INTERNATIONAL SCHOOL

Our partnership with HELP International School (HIS) provides an opportunity for students to learn in a world class school setting through interacting with the teaching faculty of the school and participating in research projects involving the school.



**Research collaboration** between lecturers from the Department of Education with teachers in the Early Childhood Center at HIS.



**Practicum and Internships opportunities** for students doing their early childhood education and MEDTL Programmes.



**Possible employment opportunities** at HIS upon graduation.



**Training and development of teachers** at HIS through postgraduate studies in Teaching and Learning.

## A WORLD CLASS INTERNATIONAL SCHOOL



**Times Education Supplement – Shortlisted for 2018 International School of the Year**



**Council of International School - Member**



**Registered Center as a Cambridge School.**



**Featured School for the International Primary Curriculum**



**Distinguished School**

**APPLE Distinguished School**

Commitment to innovation in education and leadership through their Apple.Inc Partnership



**Common Sense School**

A recognition of HIS dedication and commitment to helping students think critically and use technology responsibly to learn, create, participate, and share.



**Eco-Schools Silver Award**

**Eco-Schools Silver Award**

This recognition reflects the dedication to sustainable management of school grounds, facilities and curriculum.



**Member of FOBISIA**

Regional Federation of leading British International Schools in Asia









## DEPARTMENT OF EDUCATION: EARLY CHILDHOOD EDUCATION PROGRAMME (ECE)

involves both formal and informal education, and engages young children from birth to 6 years old with learning that is fundamental to the holistic development of the child.

If you are passionate about working with young children, Early Childhood Education (ECE) is the right programme for you. ECE involves both formal and informal education, and engages young children from birth to 6 years old with learning that is fundamental to the holistic development of the child.

HELP University's Early Childhood Education programme aims to develop graduates who will be visionary leaders in early childhood settings. The

Educator-Carer from HELP University acquires knowledge and understanding, skills and strategies, attitudes and values in the following distinctive Early Childhood Care and Education (ECCE) domains.

- Child Development
- Curriculum and Learning Environment
- Administration and Management
- Families and the Community
- Professional Development



# ENTREPRENEURIAL LEARNING IN EARLY CHILDHOOD EDUCATION

A significant feature of the ECE programmes is to train students to be future entrepreneurs in the early childhood industry. Equipped with relevant business skills and knowledge to set up businesses, students will play significant roles toward providing access to quality education, lifelong learning and the overall wellbeing of young children.

## THE HELP DIPLOMA IN ECE (DECE) AND BACHELOR OF ECE (BECE) CURRICULUM

HELP University offers systematic and comprehensive Diploma and Bachelor degrees in Early Childhood Education. Our programmes are fully accredited and recognised by the MQA (Malaysian Qualifications Agency) and comply with the Malaysian Qualifications Framework. The scope and content of the programmes are spiral and integrated.

Educator-Carers begin their ECE studies with a broad appraisal of the ECCE knowledge base and progressively become qualified through practical experiences in Nurseries and Kindergartens. They eventually become certified to work with young children in homes, schools and various societal settings.

## PEDAGOGICAL APPROACH

The classes are conducted via various teaching and learning styles such as blended learning, face-to-face tutorial, project-based learning, small and large group discussions, field trips, instructional games, and oral presentations. With such active learning and learner-centred pedagogical approaches, students are given the freedom and ownership in their learning. This will motivate them to a higher level of achievement.

## 21ST CENTURY CLASSROOM

The 21st century classrooms in HELP University are equipped with the latest hardware, software and a centralised control system to create a comfortable and safe learning environment conducive for meaningful communication and collaboration. As a result, students will be able to brainstorm and discuss critical issues as well as generate novel ideas.

## DIVERSITY IN LEARNING

HELP University is home to international students from countries such as Japan, South Korea, China and Brunei. Therefore, students can experience an international learning environment. This contributes to their awareness and understanding of other cultures as well as an appreciation of other points of view. It contributes to students' ability to adapt to the global work environment.

## ACADEMIC TEAM

The academic team is a good mix of local and international lecturers who bring with them a wealth of practical experience and expertise in research in early childhood education.





# DIPLOMA IN EARLY CHILDHOOD EDUCATION

(R2/0112/4/0100) (06/28) (MQA/FA2145)

This programme equips students with the skills and knowledge to become effective educators. Spanning two years, the curriculum covers child development, teaching methods, language, health, and curriculum planning, while also addressing special education needs and preparing students for leadership roles and entrepreneurship in early childhood education.

## PROGRAMME DETAILS

The programme is a study of 28 courses:

- 19 Core Major
- 2 Electives
- 2 Practicum
- 5 HEP/MQA – MPU Compulsory Subjects

## STUDY LOAN AND STUDY AWARDS

Candidates can apply for PTPTN Loan, EPF withdrawal, HELP University Study Awards and fee waivers.

## DECE TRANSITS TO BECE

DECE qualified and certified Educator-Carers are eligible for direct admission into the 2nd year of the BECE (Hons) Programme.

## INTAKES

January, May, August

## COURSES

### YEAR 1

- Teaching and Learning in Early Childhood
- Child Development
- Children and Play
- Observation and Assessment of Young Children
- Academic English for Early Childhood Educators
- ICT and Multimedia
- Health, Safety and Nutrition for Young Children
- Visual Arts
- Music, Movement and Drama for Young Children
- Early Mathematics
- Social Studies and Environment
- Physical Education and Wellness

### YEAR 2

- Language and Early Literacy
- Early Science and Technology
- Teaching Young Children BM (compulsory for Malaysian)
- Teaching Young Children English (compulsory for Internationals)
- Curriculum Planning and Program Development
- Introduction to Special Education
- Families and Community
- Foundation of Early Childhood Business and Entrepreneurship

## PRACTICUM

- Practicum I (TASKA)
- Practicum II (TADIKA)

## 2 ELECTIVE SUBJECTS

- Guiding Young Children's Behaviours
- Environments in Early Childhood Setting
- Ethics and Professionalism for Early Childhood Professional
- Managing Early Childhood Settings

## MPU SUBJECTS

### Two MPU1

- Penghayatan Etika dan Peradaban \*\*
- Falsafah dan Isu Semasa \*\*
- Bahasa Melayu Komunikasi 1 (International)

### MPU2 / MPU3

- Bahasa Kebangsaan A (for Local students without a credit in SPM Bahasa Melayu), and
- Integrity and Anti-Corruption (Malaysian and International)

To choose at least 1 **MPU4** Subject

- Co-curriculum – Sports 2
- Co-curriculum – Community Service 2

## GENERAL ELECTIVE

- Communication 1

## HELP GRADUATE ATTRIBUTE

- Discovering Oneself



# DIPLOMA IN EDUCATION

(R/0113/4/0003) (11/29) (MQA/FA12317)

The aim of this programme is to provide learners with broad-based knowledge and skills related to education developments, best practices, theories, technology, and pedagogical content knowledge in teaching and learning for prospective teachers involved at the primary and secondary school levels.

Learners are expected to develop good pedagogical skills in classroom teaching and learning environments with an emphasis on practical methodologies, content, general pedagogy, and instructional technology needed to excel in a 21st century and IR 4.0 learning context.

The Diploma in Education programme prepares learners to apply broad-based knowledge of teaching and learning, higher order thinking, and reasoning skills in varied educational settings. This course equips learners with mastery in pedagogical content knowledge, incorporates soft-skill development and helps the learner contribute professionally in different learning environment.

In addition, learners are expected to acquire classroom management and leadership skills besides being trained in student counselling and guidance of young children.

## PROGRAMME DETAILS

2½ year / 2 years 1 sem programme which is a study of 27 courses @ 90 credit hours:

- 22 Core Major
- 2 Electives
- 1 Practicum
- 5 HEP/MQA – MPU Compulsory Subjects

## INTAKES

January, May, August

## COURSES

### YEAR 1

- History and Philosophy of Education
- Psychology of Education
- Theories and Practice of teaching and learning
- Computer Literacy Skills
- Curriculum Planning
- Child and Adolescent development
- Mental Health and Group Dynamics
- Study Skills
- Teaching Language Arts
- Instructional Design
- Teaching with Technology

### YEAR 2

- Social Studies and Environmental Studies
- Sociology of Education
- Teaching Methods and Strategies
- Effective Classroom Management
- Physical and Health Education
- Mathematics and Science Skills
- Educational Assessment
- Educational Management and Leadership
- Development of Malaysian Education
- Professional Development
- Critical Thinking

### ELECTIVES (CHOOSE 2)

- Music and Movement in Education
- Special Needs Education
- Art and Craft Skills
- Health and Physical Skills

### PRACTICUM

- Teaching Practicum

### MPU SUBJECTS

#### Two MPU1

- Penghayatan Etika dan Peradaban\*\*
- Falsafah dan Isu Semasa \*\*
- Bahasa Melayu Komunikasi 1 (International)

#### MPU2 / MPU3

- Bahasa Kebangsaan A (for Local students without a credit in SPM Bahasa Melayu), and
- Integrity and Anti-Corruption (Malaysian and International)

To choose at least 1 MPU4 Subject

- Co-curriculum – Sports 2
- Co-curriculum – Community Service 2

### GENERAL ELECTIVE

- Communication 1

### HELP GRADUATE ATTRIBUTE

- Discovering Oneself

# BACHELOR OF EARLY CHILDHOOD EDUCATION (HONOURS)

(R2/0112/6/0041) (05/27) (A10104)

**INTAKES:** January, May, August

HELP's Bachelor of Early Childhood Education (Hons) is aimed at allowing our early childhood specialists to foster a wide range of competencies that cover the development of the young child from birth to junior primary levels.

## PROGRAMME DETAILS

The contents of the study fulfil the minimum 121 credit hours comprising 36 subjects.

- 24 Major ECE Courses
- 4 ECE Electives
- 2 Workplace Practicums in Nursery and Kindergarten respectively
- 4 MPU Courses
- 2 HGA Courses

## DELIVERY AND ASSESSMENT MODES

The programme uses the blended learning approach with the combination of face-to-face classes and online classes. The programme focuses on student centred learning. Hence a wide variety of learning experiences, instructional approaches, and academic support strategies that are intended to address the distinct interests and aspirations of students are used.

The range of assessment modes is aligned to achieve the main outcome of the BECE (Hons) programme, which is the qualified status of the educator and carer of young children. The type of assessments comprise of formative and summative assessments of written and practical assessment, presentation, portfolio, project and community service.

**EXPERIENTIAL  
LEARNING**

**REVIEW AND  
REFLECTION**

**DEVELOPMENT  
OF TEACHING  
SKILLS**

**EMPIRICAL  
SIGNIFICANCE**

## COURSES

### YEAR 1

- Growth and Development for Early Childhood
- Foundation of Early Childhood Care and Education
- Children and Play
- Health, Safety and Nutrition for Young Children
- Art and Craft
- Young Children's Literature
- Music and Movement in Early Childhood
- Observation and Assessment in Early Childhood
- Foundation of Early Childhood Business and Entrepreneurship
- Curriculum Planning & Programme Development

### YEAR 2

- Managing Young Children's Behaviours
- Social and Environment Studies in Early Childhood
- Science and Technology in Early Childhood
- Mathematics in Early Childhood
- Teaching Young Children English
- Teaching Young Children Bahasa Malaysia
- Special Need in Early Childhood Education
- Physical and Health Education in Early Childhood
- Research Methodology in Early Childhood

### YEAR 3

- Practicum 1: Nursery Experience
- Children's Theatre
- Families, Community and Society
- Early Childhood Entrepreneurship and Management
- Practicum 2: Kindergarten Practice
- Issues, Ethics and Professionalism in Early Childhood Education
- Early Childhood Research Project

### ELECTIVES

- Elective 1
- Elective 2
- Open Elective

### MPU SUBJECTS

Two **MPU1\***

- Penghayatan Etika dan Peradaban
- Falsafah dan Isu Semasa
- Bahasa Melayu Komunikasi 2 (International)

### MPU2 / MPU3

- Bahasa Kebangsaan A (for Local students without a credit in SPM Bahasa Melayu)
- A\* Gen Careers in Malaysia and Beyond
- Integrity and Anti-Corruption (Malaysian and International)

To choose at least one **MPU4** subject

- Co-curriculum – Sports 2
- Co-curriculum – Event Management 2

### GENERAL ELECTIVE:

- Communication and Leadership Skills

### HELP GRADUATE ATTRIBUTE

- Discovering Oneself
- Engaging the World





“

My journey with HELP throughout the 3-4 years as a student was a very pleasant experience. Attending lectures and tutorials was among the activities I looked forward to everyday. Lecturers always delivered the topics in engaging and interesting ways. Though the assignments and assessments were often challenging, it kept me motivated and driven to complete them with my strong determination. As cliché as HELP's favorite tagline 'University of Achievers' sounds, it has indeed proven itself to be very true, for it has helped me to achieve my dreams and ambitions.”

**Denise Duar Xia Shing**  
**Bachelor of Early Childhood Education (Honours)**  
**First Class Honours**





# MASTER OF EDUCATION (TEACHING AND LEARNING)

(R/0110/7/0036) (04/29) (MQA/FA8168)

**INTAKES:** January, May, August

The Master of Education (Teaching and Learning) is focused on providing a platform for aspiring teachers and other educational professionals to consider, reflect on and change what they do in all activities related to teaching and learning.

Those who complete the postgraduate degree will develop a strong foundation as reflective practitioners. They will demonstrate growth as caring professionals who skilfully apply current theories and research to their pedagogical practices.

Career prospects upon completion of the programme include Heads of Departments, Programme Directors, Academic Advisors, Curriculum Designers, Higher Education Lecturers, Trainers, Teachers, Tutors and School Administrators.

## PROGRAMME DETAILS

From 2 years (full-time) to 4 years (part-time) leading to the HELP Master of Education (Teaching and Learning) .

## MODULES

### CORE MODULES (Compulsory)

- Foundations of Education
- Curriculum Development
- Instructional Media in Teaching and Learning
- Educational Research Methodology
- Project Based Learning
- Assessment and Evaluation in Education
- Interaction and Facilitating Skills in Educational Contexts
- Strategies for Teaching and Learning

## ELECTIVES (Choose One)

- Educational Management and Leadership
- Technology and Educational Innovations
- Theatre Arts in Educational Contexts

## TEACHING SUBJECTS (Choose One)

- Teaching of Language and Literature
- Teaching of Mathematics and Science
- Teaching of Social Studies and Environment

## PRACTICUM (Compulsory – select one education setting: Primary / Secondary / Non-formal / Tertiary)

- Practicum and Research Inquiry in Education Settings

“Balancing the Master of Education (Teaching and Learning) while working as a full-time teacher at HELP International School was challenging, but the support from my lecturers and supervisors made all the difference.

My supervisor guided me to become an effective teacher-researcher and manage my time well. I was honored to present my research at HELP's Research Fest and a major Chinese Language conference in Singapore.

This experience, coupled with the solid foundation in teaching and learning principles from HELP, has advanced my career, including being accepted into the Apple Distinguished Educators family, where I contribute to global education.”

**Vicky Heng**  
Master of Education (Teaching and Learning)  
Teacher, HELP International School





# DOCTOR OF PHILOSOPHY IN EDUCATION

(N/0114/8/0008) (07/27) (MQA/PA13817)

**INTAKES:** January, May, August

The aim of this programme is to provide learners with a comprehensive coursework cum research study. Learners will develop a deep understanding of both subject specialisation and research in one of the three disciplines, Educational Management, Early Childhood Education, and, Teaching of English as a Second Language.

This mixed-mode programme begins with direct instruction to help learners master research and subject-specific skills, enabling them to transition into the research dissertation phase.

Combining content mastery and research expertise, learners are prepared to become professional researchers and subject-matter specialists.

The knowledge gained can be applied in various roles, including positions in universities, colleges, education departments, schools, or other institutions offering education programmes.

During the coursework phase, learners engage sessions with facilitators and peers, culminating in the preparation of a Concept Paper.

This serves as a bridge between theory and practice, equipping learners with the competencies needed for the dissertation phase.

Seminars and workshops are also held to provide the knowledge and skills required to successfully complete the dissertation.

## PROGRAMME DETAILS

3-year programme (one year of coursework and two years of dissertation exercise). The whole programme comprises a total of 80 credit hours as shown below:

- The coursework phase comprises 6 courses totalling 24 credit hours and the dissertation phase comprises 56 credit hours (coursework to dissertation ratio: 30:70) incorporating the following aspects:
- 2 Compulsory Subjects
- 2 Specialisation Subjects
- 1 Elective
- 1 Concept Paper
- Dissertation

### YEAR 1

#### SEMESTER 1 Compulsory Courses

- Advanced Educational Research Methodology
- Data Analysis in Research

#### SEMESTER 2 & SEMESTER 3

Select any ONE of the THREE Subject Specialisations

#### Subject Specialisation: Educational Management

- Educational Management and Leadership
- Management of Educational Change

#### Subject Specialisation: Early Childhood Education

- Theories and Practices of Early Childhood Education
- Child Development

#### Subject Specialisation: Teaching of English as a Second Language (TESL)

- Second Language Teaching Methodology and Learning
- Second Language Acquisition

### ELECTIVES

The elective subject will be chosen from any one of the subject specialisations. For example, if a learner's subject specialisation is Educational Management, then the elective subject can be selected from either Early Childhood Education or Teaching of English as a Second Language.

### COMPULSORY COURSE

- Concept Paper

### YEAR 2

- Dissertation

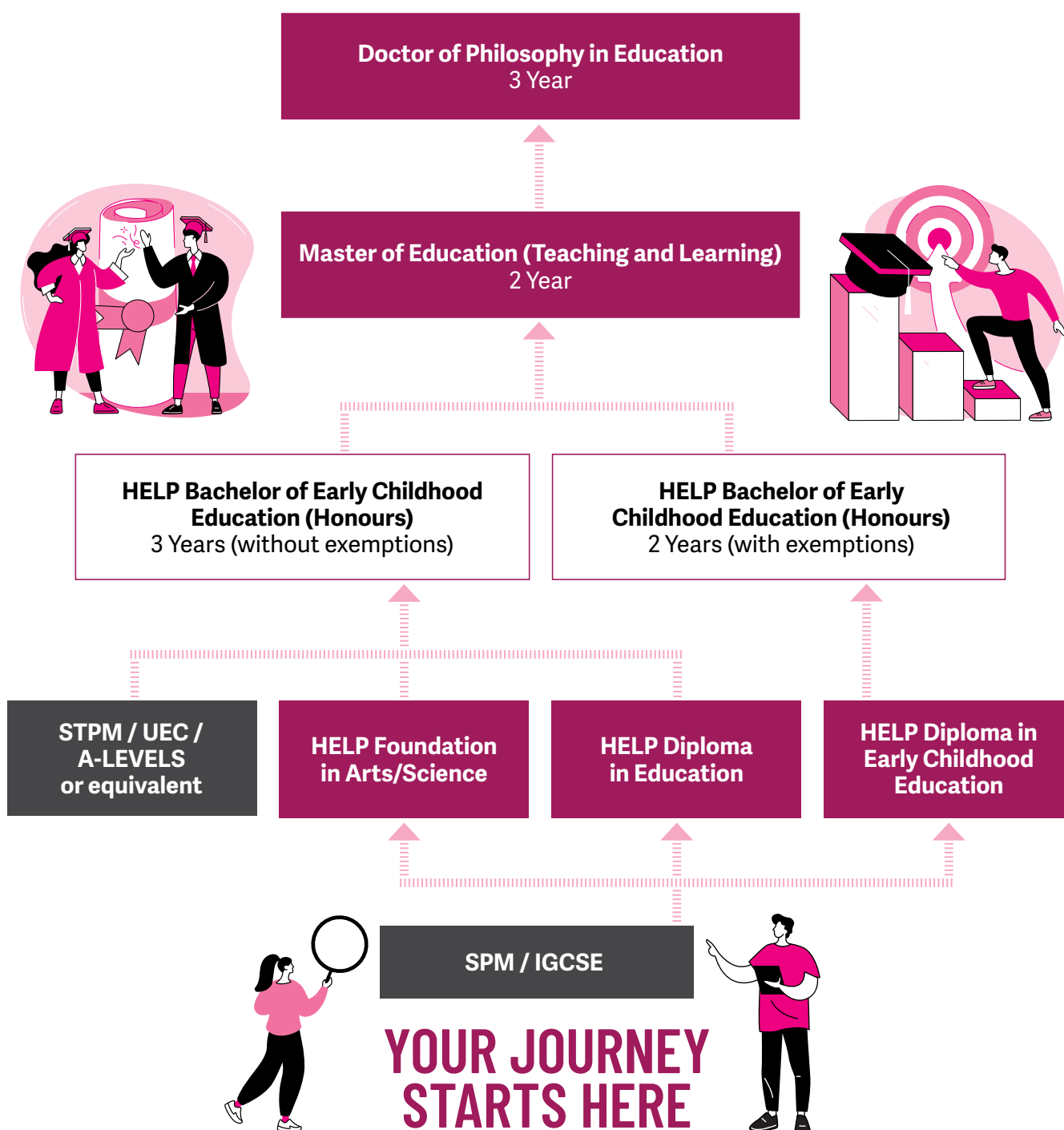
### YEAR 3

- Dissertation



# UNLOCKING A WORLD OF OPPORTUNITIES

Explore pathways from secondary education to university and beyond. Earn your degree, pursue postgraduate opportunities, and step confidently into a successful career – your journey starts here.



# STUDENT ACTIVITIES



ECCE Violence Free Week



Recital with the angklung that ECE students master and teach to preschoolers.



Storytelling using creative visual aids.

## STUDENT COUNCIL OF EDUCATION DEPARTMENT (SCED)

Every student is a member of the Students Council. A wide range of activities is organised by the members, including several community services. Informal learning experiences augment the formal learning experience of the programme. The elected student committee organises a variety of events, including:

- Activities during the ECCE Violence Free Week
- Collaboration with UNICEF to conduct Anti-Bullying Workshop
- Activities with the Pop-Up Stories Fan Clubs of Selangor and KL
- Participation in Orang Asli Study Camps.

## EXTRAVAGANZA

The Early Childhood Extravaganza is an annual event co-organised by the students and staff of the Department of Education. This gathering has two main objectives.

Firstly, it aims at enriching the values and skills of our students through event management. Secondly, it showcases to families and friends the students' learning materials that were produced throughout the academic year. The Early Childhood Extravaganza comprises storytelling sessions, an art exhibition, music and movement and a children's theatre production. Children from homes and centres are invited to spend time with us during this fun-filled occasion.

## MENTORING PROGRAMME

The ECE Students Council provides a support system to both new and continuing students. During each orientation event, the Students Council will introduce new students to the seniors. A buddy system between the senior and junior students will help the new students' transition to becoming undergraduate and postgraduate students.

EXPLORE OUR  
DIVERSE AND  
ACCOMPLISHED  
ACADEMIC TEAM





+6012-928 0864



university.help.edu.my



study@help.edu.my

## HELP University Sdn Bhd

Company Registration Number: 198201005211 (84963-D)  
MOHE Approval Number: DU028(W)

### ELM Business School

No. 15, Jalan Sri Semantan 1,  
Off Jalan Semantan, Bukit Damansara,  
50490 Kuala Lumpur  
Tel: 03-2716 2000

### Subang Bestari Campus

Persiaran Cakerawala, Subang Bestari,  
Seksyen U4, 40150 Shah Alam, Selangor  
Tel: 03-7849 3000



SCAN TO FOLLOW US ON  
SOCIAL MEDIA



## ALUMNI HELP FOR LIFE



### LIFELONG LEARNING

Complete your Masters and  
Doctorates programmes  
with us



### MENTAL WELLNESS AND FAMILY

Marriage Counselling  
Psychological support  
services



### RESKILLING AND UPSKILLING

Up-to-date Microcredential  
courses for in-demand jobs



### PARENTING

Free parenting workshops

NEED HELP WITH YOUR  
CAREER DECISIONS?

Get free career counselling and testing services

- Career testing
- Career coaching
- Internship programmes
- Job placement



Scan  
me for  
a free  
career  
test